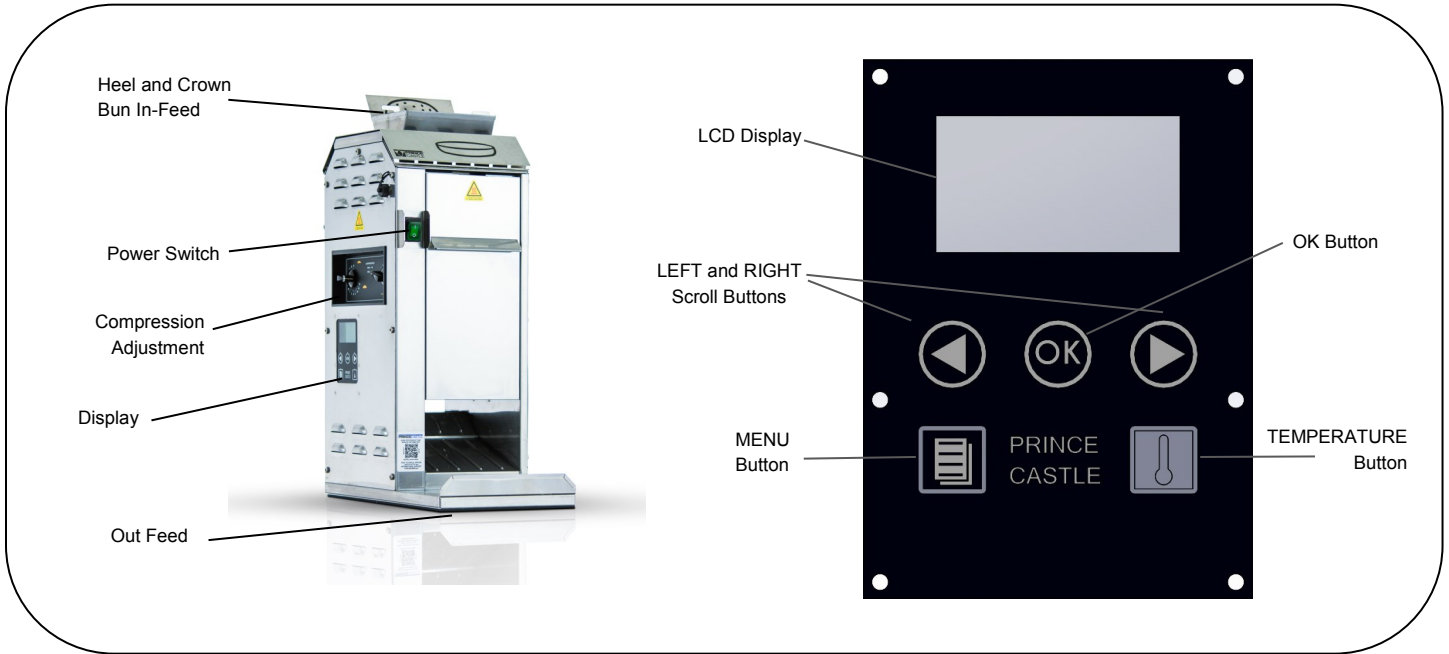


Product Identification



WARNING! Before first use of this equipment, read these instructions!

LIMITED WARRANTY

This product is warranted to be free from defects in material and/or workmanship for a period of two (2) years from date of original installation, not to exceed 30 months from date of shipment from our factory. Any part or component which proves to be faulty in material and/or workmanship within the warranty period will be replaced or repaired (at the option of Prince Castle, Inc.) without cost to the customer for parts or labor.

This warranty is subject to the following exceptions/conditions:

- Use of any non-genuine Prince Castle parts voids this warranty and all work must be performed by an authorized Prince Castle Service Agent.
- All labor shall be performed during regular work hours. Overtime premium will not be covered.
- Travel charges are limited to 200 kilometers (100 miles) round trip, 2 hours travel time, one trip per repair.
- Damage caused by carelessness, neglect, and/or abuse (e.g., using wrong current, dropping, tampering with or altering electrical components, or improper cleaning) is not covered.
- Equipment damaged in shipment, by fire, flood or an act of God is not covered.
- Damage to non-stick coated surfaces is not covered by this warranty.

TABLE OF CONTENTS

Product Identification.....	Page 1
Warranty Statement.....	Page 1
Table of Contents.....	Page 1
Electrical Specifications.....	Page 2
Safe Service Practices.....	Page 2
Serial Number Matrix.....	Page 2
Installation.....	Page 3
Powering Up Unit.....	Page 4
Toasting Buns.....	Page 4
Cleaning.....	Page 5
Management Programming.....	Page 7
Troubleshooting.....	Page 9
Parts List.....	Page 10
Additional Information.....	Page 12

PRINCECASTLE™

MARMON FOODSERVICE TECHNOLOGIES
A BERKSHIRE HATHAWAY COMPANY

355 East Kehoe Blvd. • Carol Stream, IL 60188 USA
Telephone: 630-462-8800 • Toll Free: 1-800-PCASTLE
Fax: 630-462-1460 • www.princecastle.com



Vertical Artisan Toaster

DCFT-ART-MCD Series



Safety Information



WARNING

Indicates information important to the proper operation of the unit. Failure to observe may result in damage to the equipment and/or severe bodily injury or death.



CAUTION

Indicates information important to the operation of the unit. Failure to observe may result in damage to the equipment.

Electrical Specifications

200-240V, 50/60Hz, 1250-1800W

Single Phase Power

Important

This appliance can be used by children aged from 8 years and above and persons with reduced physical, sensory or mental capabilities or lack of experience and knowledge if they have been given supervision or instruction concerning use of the appliance in a safe way and understand the hazards involved. Children shall not play with the appliance.

General

This appliance is designed for toasting bread products in a commercial kitchen. The dimensions of the bread products are defined by the customer.

Serial Number Matrix

The manufacture date is encoded in the unit's serial number. The service bench installation date (used to determine warranty coverage) is considered to be the end of the following month. For example:

Serial Number: MP
 Manufacture Date: June 2014
 Service Bench Installation Date: July 31, 2014

B	H	G	K	1	2	0	4	5	6	X
Month	Year	B.U.	Location	6 Digit Incremental Number						Refrigerant

Month
A=January
B=February
C=March
D=April
E=May
F=June
G=July
H=August
J=September
K=October
L=November

Year
L=2016
M=2017
N=2018
P=2019
Q=2020
R=2021
S=2022
T=2023
U=2024
V=2025
W=2026

B.U
D=Domestic
G=Global
M=McD
Q=Q I.O.
C=China

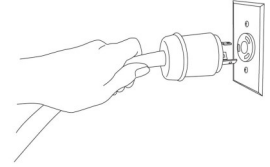
Location
K=Kehoe
L=Lies
P=Plymouth
C=China

Refrigerant
A=134A
B=404A
M=401A
R=R22
X=N/A

Installation

- 1 Unpack and inspect.** Remove the unit from the carton and inspect for signs of damage. If there is damage to the unit:
- Notify the carrier within 24 hours of delivery.
 - Save carton and packaging materials for inspection purposes.
 - Contact your local dealer, or if purchased directly, the Prince Castle Sales Department at 1-800-722-7853 or 630-462-8800 to arrange for a replacement unit.

- 7** Plug in Unit into a grounded receptacle



WARNING

All electrical connections must be in accordance with local electrical codes and any other applicable codes.



CAUTION

DO NOT LIFT UNIT BY THE BUTTER WHEEL. EITHER LIFT FROM DOORS, OR THE BOTTOM OF THE UNIT

- 2 Verify parts.** Verify that all parts have been received:
- Dual Continuous Feed Toaster with two conveyors.
 - Release Sheet Kit.

- 3 Place toaster on flat surface.** Remove blue and/or white protective covering.

- 4 Remove packing.** Remove the cardboard spacer holding the conveyors up for shipping.

- 5** Insert the release sheet as shown in Figure 1.

- 6** Install the release sheet retaining bracket as shown in Figure 2.

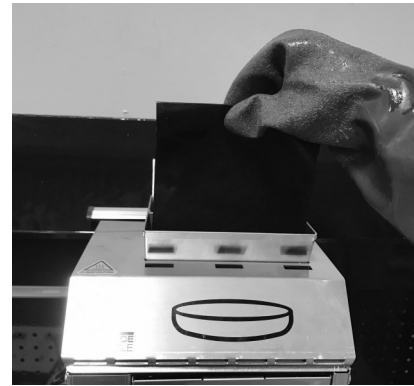


Figure 1



Figure 2

Vertical Artisan Toaster

DCFT-ART-MCD Series



Power Up Unit

1 Plug in unit as shown in Figure 3.

2 Power unit on as shown in Figure 4.

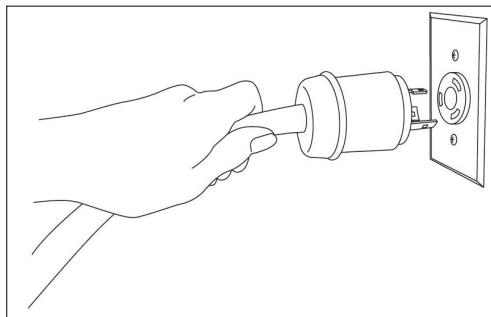


Figure 3

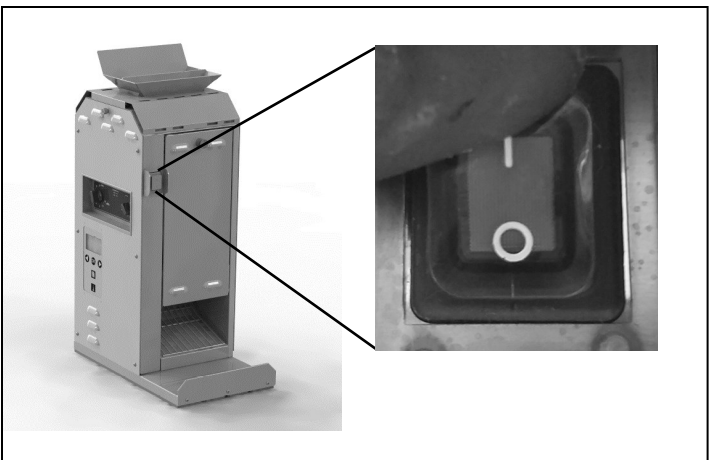


Figure 4

Toasting Buns

1 Feed product into top of Artisan Toaster. Heels are toasted in the front slot and crowns are toasted in the rear slot. The sides to be toasted should face the platen (Black Teflon sheet). Refer to Figure 5 for Insertion and Retrieval of buns.

2 Refer to Figure 6 to show Crown and Heel side of toaster.



Figure 5

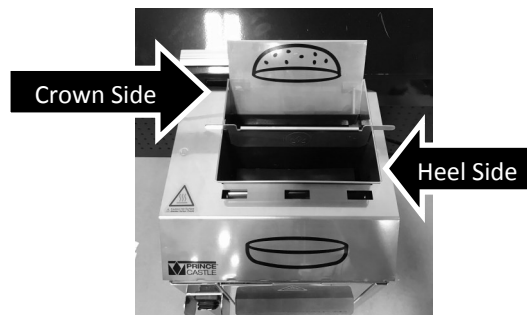


Figure 6

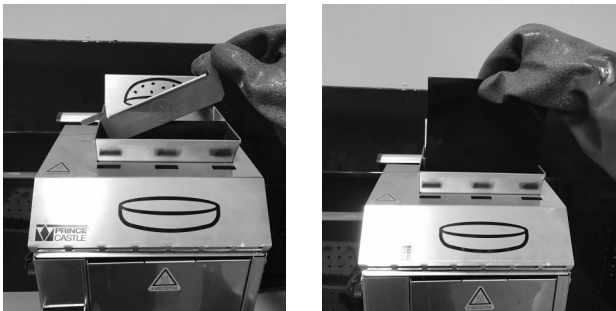
Cleaning (Daily)

- 1** Ensure the unit is powered off before initiating any cleaning procedures. Allow unit to cool for at least 20 minutes before attempting to clean.

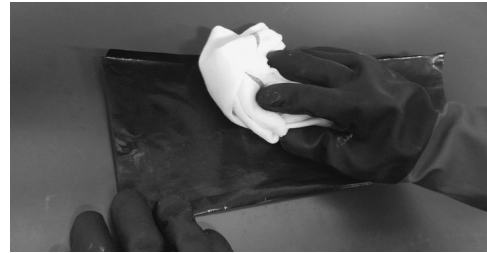
- 2** While wearing a pair of heat-resistant gloves, wipe down in feed tray with a clean, sanitizer-soaked towel.



- 3** Remove Teflon release sheets by first lifting up on the retaining bracket, then removing the Teflon sheets. Take the retaining bracket to the 3-compartment sink to wash, rinse, and sanitize.



- 4** Spray a clean, sanitizer-soaked towel with approved sink detergent solution then wipe down release sheets on both sides in one direction, away from where it is being held, being careful not to crease the sheet.



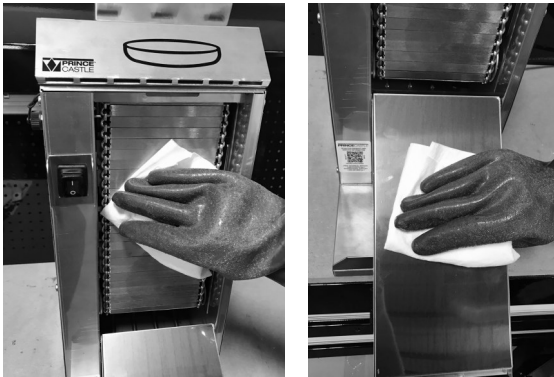
- 5** Re-feed release sheet back through the toaster, and reinstall the retaining bracket

- 6** Follow the Steps in PR76—Butter Wheel Daily Cleaning to clean the butter wheel.

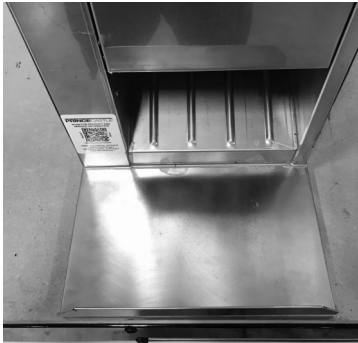
Cleaning (Cont..)

7 Clean front and rear conveyor and club belts.

- With power off, remove gloves from hands to lift lid and open front conveyor door.
- Put heat-resistant gloves on to clean.
- Spray approved degreaser solution onto a clean, sanitizer-soaked towel. Clean the front main conveyor belt. Rinse with a separate clean, sanitizer-soaked towel.
- Close front door, power unit ON, count 13 seconds to reveal unclean side of belt, power unit OFF, open door and repeat cleaning using the sanitizer-soaked towel sprayed with approved degreaser solution.
- Wipe down the inner panel of the conveyor access door with a clean, sanitizer-soaked towel sprayed with approved degreaser solution.
- Repeat the belt cleaning process for rear main conveyor belt, and rear inner panel.



8 Wipe out crumbs from landing zone with a clean, sanitizer-soaked towel.



9 Spray approved degreaser solution onto a clean, sanitizer-soaked towel and wipe down the entire unit.



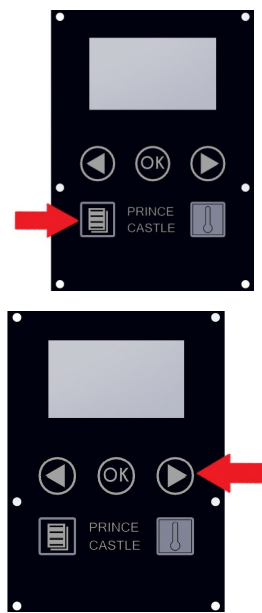
Management Programming

1

To Enter Programming screens
Press and hold the MENU
button for 6 seconds. The
PROGRAMMING VERSION
screen will appear in the LCD
display.

From the PROGRAMMING
VERSION screen, you may:

Press RIGHT scroll
button to advance to the
next menu item



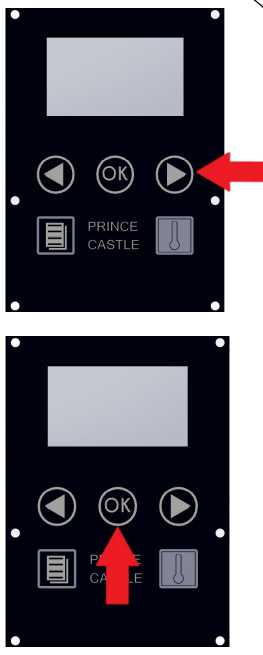
3

To Adjust PLATEN
TEMPERATURE from the
SELECT LANGUAGE Screen,
press the RIGHT scroll button.
Press the OK button to enter the
programming screen.

A. From the PLATEN
TEMPERATURE screen that
appears adjust the tem-
perature using the RIGHT
and LEFT scroll buttons.

Accept the new Temperature by
pressing OK.

NOTE : To cancel without
accepting the new setting,
press the MENU logo button to
return to the previous screen



2

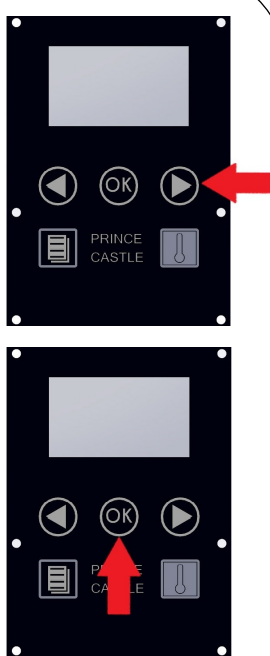
To Change the LANGUAGE
from the PROGRAMMING
VERSION

Screen, PRESS the left scroll
button.

From the SELECT
LANGUAGE Screen,
Press OK button

A. From the
LANGUAGE screen
that appears, use
the RIGHT and
LEFT scroll buttons.
TO select different
Language

B. Accept the new
language by pressing
OK button to return to
the SELECT
LANGUAGE screen



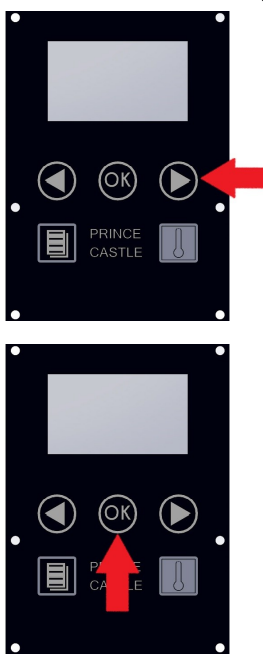
4

To adjust SELECT F/C
From The PLATEN
TEMPERATURE screen,
press the RIGHT scroll
button.

From the SELECT F/C screen
that appears, press the OK
button.

A. From the SET F/C
Screen that appears,
Use the LEFT and
RIGHT scroll buttons to
Select TEMP = F
(Fahrenheit) or
C (Celsius)

B. Accept the new scale
By pressing the OK
Button to return to
The SELECT F/C
screen

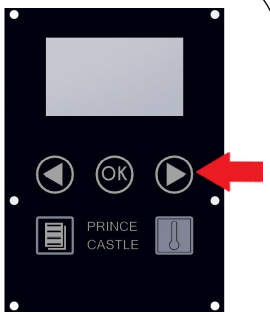


Management Programming (Continued)

5

To adjust set TOAST TIME from the SELECT F/C screen, press the RIGHT scroll button

From the SELECT TOAST TIME Screen, Press OK button



- A. From the SELECT TOAST TIME that appears, Adjust the set point Time Using the RIGHT and LEFT

NOTE : To cancel without accepting the new setting, press the MENU logo button to return to the previous screen



7

To enter SERVICE CODES from LON SERVICE CALL screen, press the RIGHT scroll button.

From the SERVICE CODES Screen, Press OK button

Using the Left and Right Scroll Buttons, scroll through the menu to see any service codes.



6

To enter LON SERVICE CALL from CLUB TOAST TIME screen, press the RIGHT scroll button.

From the LON SERVICE CALL Screen, Press OK button

From the LON SERVICE CALL screen that appears, the following options are available

- YES = LEFT scroll button
- NO = RIGHT scroll button
- OK = Cancel / Go Back



Troubleshooting Steps



WARNING

BURN/ELECTRICAL SHOCK HAZARD!

Platen is HOT and can cause severe burns or severe shock.

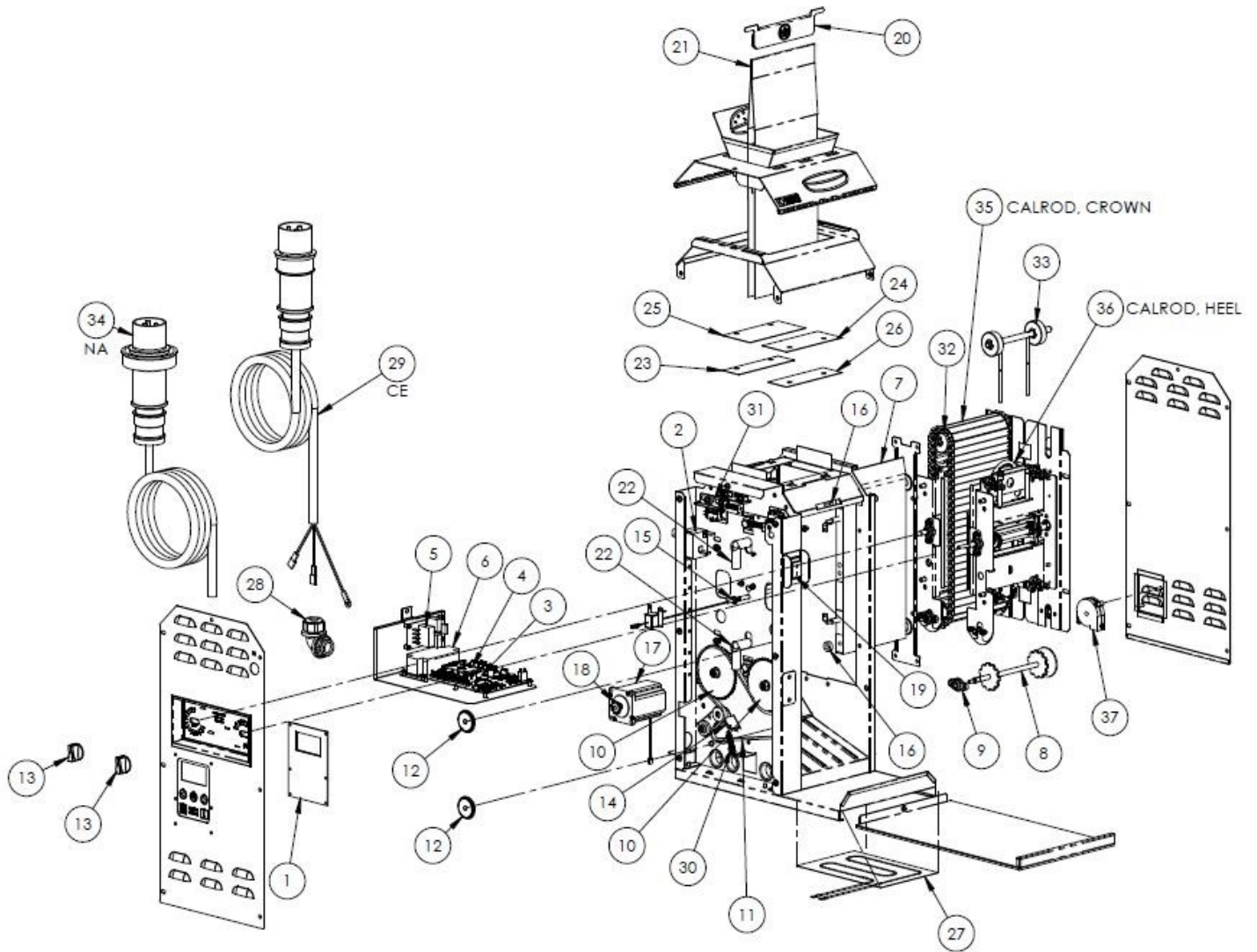
Keep hands and objects out of the toaster unit! Failure to exercise caution may result in serious injury!

Turn the unit off, unplug it and let it cool down completely before touching or working on internal apparatus. The plug removed from the outlet shall remain clearly visible to the operator during the maintenance procedure

Master Display Messages		
PROBLEM	PROBABLE CAUSE	SOLUTION
Unit will not heat up	No power to unit.	Ensure power cord is connected to proper receptacle.
	Inoperable power cord	Call for service
	Loose connection on power switch	Call for service
	Inoperable power switch	Call for service
	High limit switch tripped	Reset high level switch
	Inoperable Temperature Probe	Call for service
	Inoperable Platen	Replace Platen.
Unit heats up, but the conveyor does not run	Loose motor switch connection.	Call for service
	Inoperable motor.	Call for service
	Inoperable motor switch.	Call for service
	Stripped drive gear	Call for service
	Loose chain sprockets	Call for service
Unit under-and over-heats, but does not respond to programming.	Check temperature settings	Adjust temperature set point setting. See management programming.
	Inoperable temperature probe	Call for service
Buns under-or over-done.	Check platen adjustment. See operation manual	Move platen adjustment knobs to the correct product part setting.
	Check conveyor temperature. From READY screen, press the INFORMATION button to display the actual platen temperature.	Adjust temperature set point setting. See management programming.
	Improper toast time.	Adjust toast time as needed.

Vertical Artisan Toaster
DCFT-ART-MCD Series

Parts List Exploded View Diagram



See Page 11 for Parts List

Vertical Artisan Toaster
DCFT-ART-MCD Series



Parts List

ITEM NO.	PART NUMBER	DESCRIPTION
1	353-856S	PCB A, USER INTERFACE
2	526-281S	TSTAT,HI-LIMIT BULB & CAP,700F
3	353-262MS	PCB ASSEMBLY, MAIN CONTROLLER
4	526-013S	ASSY,RTD TEMPERATURE INTERFACE
5	353-807S	3 HEATER DRIVE PCB ASSEMBLY
6	37146S	POWER SUPPLY
7	353-640S	HEATER PLATEN, MVT
8	353-817S	LOWER ROLLER ASSEMBLY,MVT
9	353-976S	FLANGE BEARING,SELF ALIGNING.8mm SHAFT
10	353-816S	SPROCKET,#25 CHAIN,45T,.25P,.312B
11	353-750S	CHAIN, ROLLER, #25,1/4 P,89L,MVT
12	353-978S	IDLER WHEEL
13	353-844S	KNOB, COMPRESSION ADJUSTMENT
14	353-843S	BRACKET, TENSIONER,CHAIN, MVT
15	527-468S	PROBE,TEMPERATURE, .250 DIA. RTD
16	353-765S	SPACER, PLATEN,MVT
17	353-703S	MOTOR, STEP,NEMA 34-1.8°
18	353-967S	SPROCKET, MOTOR DRIVE #25 ,10T .250 BORE
19	78-233S	SWITCH,ROCKER,DPST,IP65,16A
20	353-792S	CLIP, RELEASE SHEET, MVT
21	353-663S	RELEASE SHEET,MVT
22	353-785S	SPARK PLUG BOOT,MVT
23	353-788S	BAFFLE,CROWN-LOWER
24	353-789S	BAFFLE,HEEL-UPPER
25	353-790S	BAFFLE, CROWN-UPPER
26	353-787S	BAFFLE, HEEL-LOWER
27	353-662S	HEATER, ROPE,LANDING ZONE,MVT
28	353-1009S	RIGHT ANGLE CORD GRIP
29	72-670S	POWER CORD, 16AMP,DCFT-ART
30	353-576S	SPRING, EXT,SS,1.7IN LG, 2.6LB-IN,.312OD
31	353-1013S	CONVEYOR DOOR SWITCH ASSEMBLY
32	353-772S	ASSEMBLY, CONVEYOR BELT, 6" SNAP SLAT
33	353-801S	UPPER CONVEYOR ROLLER ASSEMBLY
34	72-517S	POWER CORD, 16AMP,RING LOCK DCFT-CYT
35	353-987S	CALROD,CONVEYOR CROWN
36	353-988S	CALROD,CONVEYOR HEEL
37	353-1092S	DC BLOWER

Additional Information



Correct Disposal of this Product

This marking indicates that this product should not be disposed with other household wastes throughout the EU. To prevent possible harm to the environment or human health from uncontrolled waste disposal, recycle it responsibly to promote the sustainable reuse of material resources. To return your used device, please use the return and collection systems or contact the retailer where the product was purchased. They can take this product for environmental safe recycling.

European Distributors and Service

Catequip

19, Rue de la Paix
10320 Bouilly
France
Telephone +33 (0) 3 25 40 29 10
Fax +33 (0) 3 25 40 26 69
Web infos@catequip.com

FRANKE Foodservice Systems GmbH

Jurastrasse 3
79713 Bad Saeckingen
Germany
Telephone +49 (0) 7761 5533 0
Fax +49 (0) 7761 5533 8700
Web www.franke.com/kitchensystems/de/de/home.html

H & K Equipment

1 Cosford Lane
Swift Valley Industrial Estate
Rugby, Warwickshire CV21 1QN
England
Telephone +44 (0) 1788-554000
Web www.hkionline.com