

Why To remove stuck buns or excessive bread crumb buildup from the platen. If the release sheet is not properly installed, a bun may come in contact with the platen and become stuck in the toaster.

Be sure to always use a release sheet to protect the platen when toasting.

Time required 20 minutes to prepare 20 minutes to complete

Time of day Anytime.

Hazard icons  Chemicals  Hot Surfaces

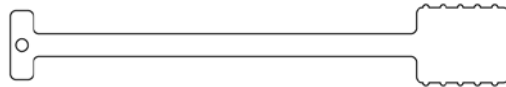
Tools and supplies



KAY® QSR Hi-Temp Grill Cleaner



McDonald's GR Grill Cleaner



Platen Cleaning Tool



ECOLAB Hi-Temp Pad
ECL#92212743
WRIN# 01391-006



Approved Sanitizer Solution



Approved Detergent Solution



Approved Degreaser Solution




McDonald's DR Concentrated Disinfectant Cleaner



Heat Resistant Gloves

Procedure

1 Turn the toaster OFF.
Put on heat-resistant gloves.
 Hot Surfaces
NOTE: Failure to wear gloves while performing this cleaning procedure can result in burns.



2 Remove stuck bun.
Stuck buns are pushed out of the toaster by pushing down on the stuck bun with the T handle end of the cleaning tool.



3 Remove stuck bun (cont'd).
Continue pushing down on the bun until the bun is pushed into the toaster landing zone.




4 Allow toaster to cool.
Wait 15 minutes to allow toaster to cool to approximately 350° F.



Platen Recovery Procedure (continued)

- 5 Remove release sheet from the toaster.
- Place release sheet on a clean, flat and dry surface.
 - Inspect the release sheet for tears, cracks and sticking.
 - Replace when necessary.




 Equipment Alert

NOTE: DO NOT fold or crease release sheet or take to the 3-compartment sink to be cleaned.

- 6 Remove the wire rack from the landing zone.
- Take the wire rack to the 3-compartment sink to wash, rinse and sanitize with approved detergent solution and sanitizer solution. Allow to air dry.



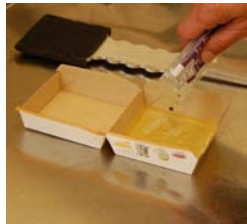
 Chemicals


Sanitizer solution and Detergent solution

- 7 Mount pad onto cleaning tool.
- Pad is secured to cleaning tool by sliding the pad fully onto the wide end of the tool, over the hooks on the tool.



- 8 Prepare the grill cleaner.
- Pour one packet of Hi-Temp Grill Cleaner or McDonald's GR Grill Cleaner into an entrée base/lid or stainless steel pan.
 - Be sure to discard entrée base/lid after use.



 Chemicals

Hi-Temp Grill Cleaner or McDonald's GR Grill Cleaner

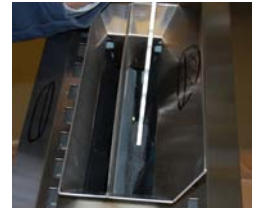
- 9 Prepare the cleaning tool for cleaning the platen.
- With the Hi-Temp Pad attached to the cleaning tool, dip the pad into the Hi-Temp Grill Cleaner or McDonald's GR Grill Cleaner.



 Chemicals

Hi-Temp Grill Cleaner or McDonald's GR Grill Cleaner

- 10 Clean platen.
- Insert the Hi-Temp Pad end of the cleaning tool into the in-feed slot of the toaster.
 - Use the Hi-Temp Pad and Hi-Temp Grill Cleaner or McDonald's GR Grill Cleaner to clean the platen of all crumbs and burned-on bread.
 - Rinse platen with clean, sanitizer-soaked towel wrapped around T handle end of tool.



 Chemicals

Hi-Temp Grill Cleaner or McDonald's GR Grill Cleaner, Sanitizer solution

- 11 Clean one side of release sheet.
- Spray a clean, sanitizer-soaked towel with approved detergent solution or McDonald's DR Concentrated Disinfectant Cleaner solution and use to wipe release sheet clean.
 - Clean the entire surface of the release sheet.
 - Immediately rinse the sheet with a clean, sanitizer-soaked towel.



 Chemicals

Sanitizer solution, Detergent solution or McDonald's DR Concentrated Disinfectant Cleaner

Platen Recovery Procedure (continued)

- 12 Clean other side.
Flip the release sheet over and repeat step 11.

NOTE: Allow to completely dry before installing.



- 13 Clean the landing zone.
- Use a clean sanitizer-soaked towel and Hi-Temp Grill Cleaner or McDonald's GR Grill Cleaner to remove all remaining bread and crumbs from the pick-up zone and surrounding areas.
 - Spray all areas of the pick-up zone with sanitizer solution.
 - Allow to air dry.



Chemicals

Sanitizer solution, Hi-Temp Grill Cleaner, McDonald's GR Grill Cleaner

- 14 Clean exterior of the toaster.
- Use a clean, sanitizer-soaked towel sprayed with Degreaser solution or McDonald's DR Concentrated Disinfectant Cleaner and clean exterior of the toaster unit and all parts.
 - Rinse exterior of unit using a clean, sanitizer-soaked towel.



Chemicals

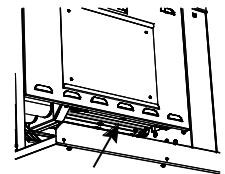
Sanitizer solution and Degreaser solution or McDonald's DR Concentrated Disinfectant Cleaner

- 15 Re-install landing zone wire rack.

NOTE: Make sure the landing zone wire rack is completely dry before installing.



- 16 Install release sheet.
- Be sure that sheet is centered over platen and the crease in sheet is centered.
 - Insert the release sheet over the center bar of the in-feed chute with one end of the sheet in the Crown slot and one end in the Heel slot.
 - Position the crease on the release sheet on top of the in-feed chute center bar, making sure that the sheet corners are not curved exposing the platen.
 - Check to see that 12.7 mm (1/2") of release sheet extends below each side of the platen.



NOTE: If 12.7 mm (1/2") of the release sheet does not extend below the bottom of the platen, then the sheet is not properly positioned.

- 17 Turn the toaster ON.



- 18 Wait until the toaster display reads "Ready".
The toaster is now ready for toasting.

