



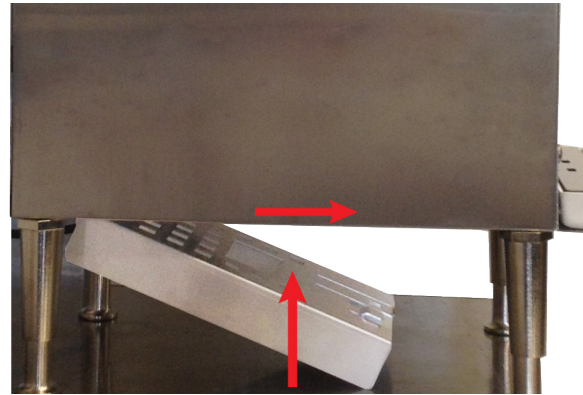
Creamer Bin Guide Installation

- ① The bin guide is installed under the creamer.

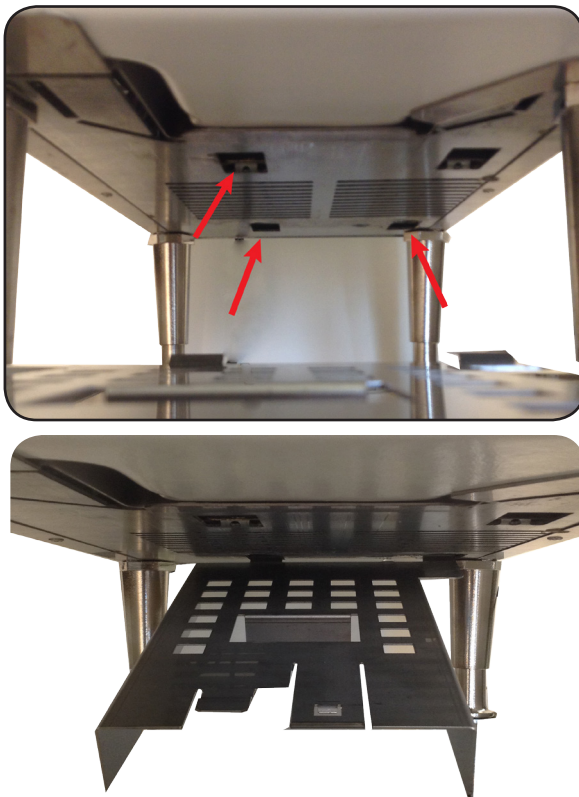
*NOTE: Your creamer will need the 4" legs.



- ③ Push the bin guide up and flush to the bottom of the machine. Pull the bin guide forward so the front tab slides into the front slot.



- ② Locate the slots near the rear of the machine. Insert the bin guide's rear tabs into the slots.



- ④ A "click" should be heard. Insert bin. If bin does not slide freely the creamer legs may need to be adjusted. Make sure bin guide is secure before leaving machine for use.

