



To ensure proper operation, please use these stickers on your Silver King Cream Dispenser.

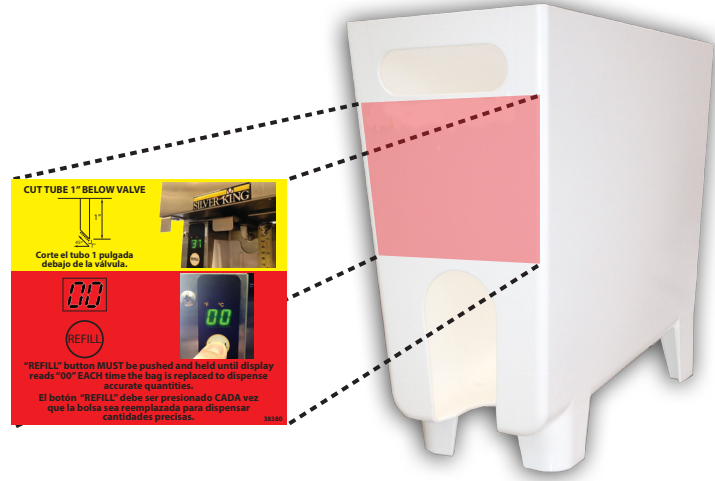
Place the QR sticker on the side of your machine where it is accessible. Scan the QR code for product information, manuals and troubleshooting.



SKMCD1P/C1



Place this sticker on the creamer hopper inside your machine. Proper use of the machine will ensure minimal dripping, accurate dispensing and controlled food costs.



Cut the dispensing tube 1" below the valve.
Always press the REFILL button after installing a new bag of cream.

NOW OFFERING MORE OPTIONS FOR YOUR SILVER KING CREAM DISPENSER

New drip tray with high backsplash makes daily cleaning even easier. Keep stirring spoons organized and close by with new undermount creamer bin.

*Available only in kits.

CONTACT YOUR KES FOR ORDERING AND PRICE INFORMATION.



Prince Castle
#10311-08

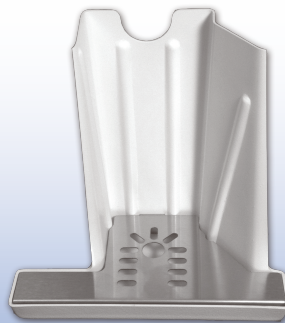


DRIP TRAY AND INSERT KIT

Franke
#145282

H&K
#10311-08

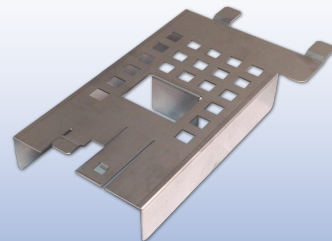
Prince Castle
#10311-09



DRIP TRAY, INSERT & BIN
GUIDE KIT

Franke
#145283

H&K
#10311-09



SILVER KING[®]

PRINCE CASTLE LLC
WORLDWIDE 
 A Marmon Group/Berkshire Hathaway Company