



# VERTICAL ARTISAN TOASTER



DCFT-ART-MCD Series

## Vertical Artisan Toaster

The Prince Castle Vertical Artisan Toaster is the new platform in Specialty Bun toasting. The dual belt design allows one handed parallel feeding, and unparalleled flexibility. Dual belt heaters and a dual sided platen pack in heat and color while maintaining maximum energy efficiency. The Mini accommodates buns up to 14 cm wide and compression adjustment up to 1.1 cm. The small footprint provides flexibility in placement for even the tightest of kitchens.

The Vertical Artisan toaster features stainless steel belts for durability, reliability and minimum consumables. Cleaning and maintenance is easy to perform with tilt out doors to access the belts. Capable of adjustable toast time, the Vertical Artisan Toaster can run 200+ buns per hour.

## Standard Features

- Toast a variety of Specialty Buns in one toaster
- Adjustable speed, temperature, and compression adjustment for multiple bread products
- Stainless steel belt for durability
- Release sheet is the ONLY consumable
- Tilt out access doors for easy maintenance
- Heated landing zone
- High quality toast at only 500° for Low current draw and power consumption
- Single Phase Power Input

## Optional Accessory—Motorized Butter Wheel

### Key Features

- Motorized butter wheel ensures the proper amount of butter is dispensed every time
- Removable Butter Tray ensures safe, sanitary food preparation, as well as ease of cleaning
- Stainless Steel Construction for Durability
- Reduces waste of expensive butter
- Features a quick-connect for ease of installation

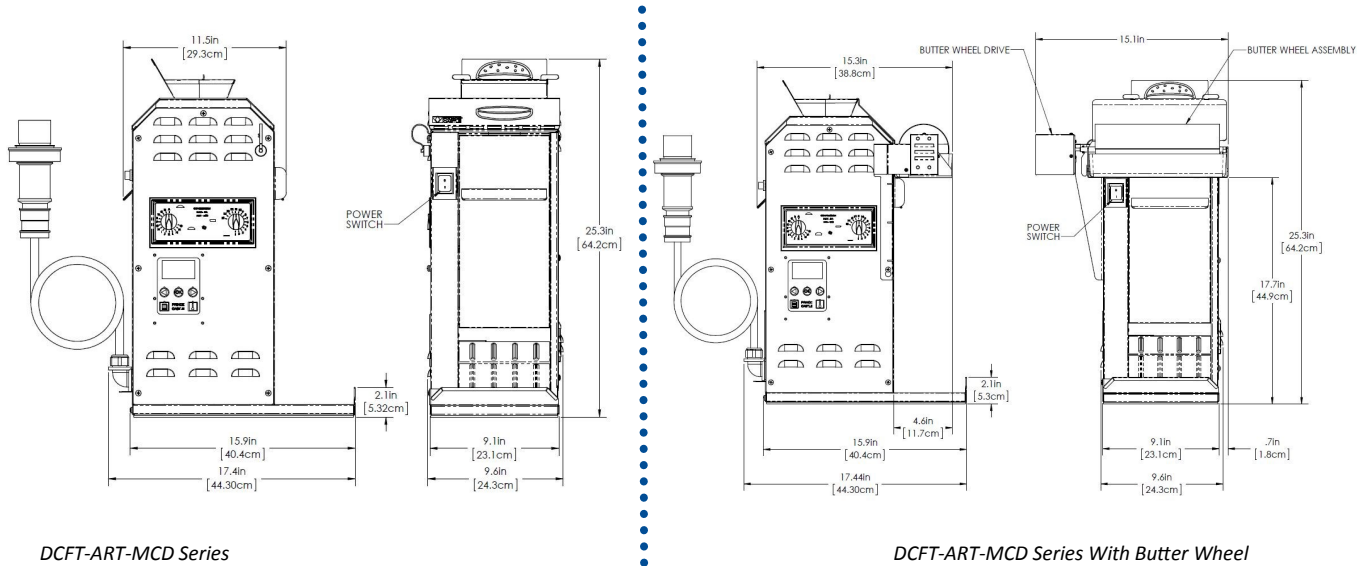


Shown With  
DCFT-BWART-MCD



## Specifications

### VERTICAL ARTISAN TOASTER (SHOWN WITH OPTIONAL BUTTER WHEEL)



## Dimensions

Model	Width in (cm)	Height in (cm)	Depth in (cm)	Gross Shipping Weight lb (kg)	Unit Net Weight lb (kg)	Shipping cu.ft. (cu.m.)
DCFT-ART-MCDCE	9.4 (23.9)	25.3 (64.3)	17.3 (43.9)	75 (34)	70 (32)	4.68
DCFT-ART-MCDNA	9.4 (23.9)	25.3 (64.3)	17.3 (43.9)	75 (34)	70 (32)	4.68
DCFT-BWART-MCD	15.1 (38.4)	7.6 (19.3)	4.6 (11.7)	8 (3.6)	9 (4.1)	0.46

## Electrical

Model Number	Voltage	Hz	Amperage	Plug
DCFT-ART-MCDCE	200/240	60/50	20A	Mennekes 148A
DCFT-ART-MCDNA	200/240	60/50	20A	Mennekes 320P6W
DCFT-BWART-MCD	NA	NA	NA	NA